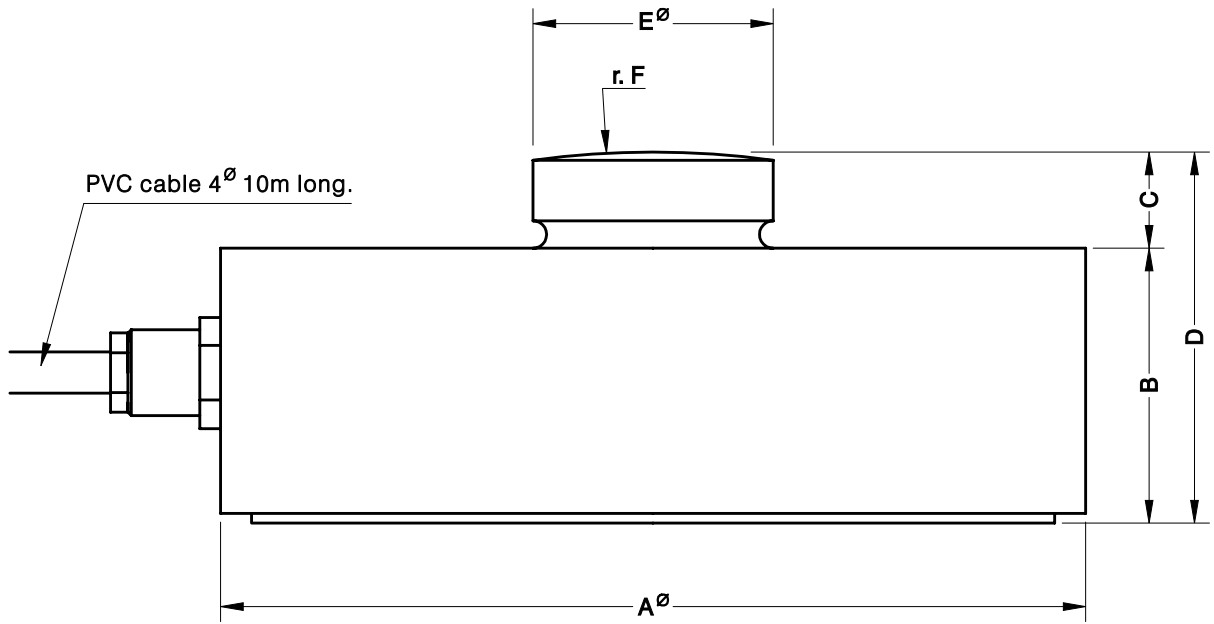


- Célula de carga de compresión
- 2000 divisiones OIML R60 clase C
- Soporte elástico de acero inoxidable
- Sellado hermético, completamente soldada
- Protección IP 68 (EN 60529) e IP 69K (ISO 20653)
- Fácil montaje
- Disponible en versión **ATEX** (opcional)
Zona 0-1-2 (gas) y 20-21-22 (polvo)
- Aplicaciones: Sistemas de pesaje de tanques y silos con requerimientos de bajo perfil

- Compression load cell
- 2000 divisions OIML R60 class C
- Measuring element from Stainless Steel
- Hermetically sealed, fully welded
- Protected IP 68 (EN 60529) and IP 69K (ISO 20653)
- Easy installation
- Available in **ATEX** version (optional)
Zone 0-1-2 (gas) and 20-21-22 (dust)
- Application: Tanks and silos weighing systems with low profile requirements

| Modelo Model | Carga nominal Nominal capacity Ln | Clase de precisión Accuracy class n. OIML | División mínima Minimum division vmin | Carga de servicio Service load 150 % Ln | Carga límite Safe load limit 200 % Ln |
|-----------------|---|---|---|---|---|
| 420 2.5 t | 2.5 t | 2000 | 0.25 kg | 3.75 t | 5 t |
| 420 5 t | 5 t | 2000 | 0.5 kg | 7.5 t | 10 t |
| 420 10 t | 10 t | 2000 | 1 kg | 15 t | 20 t |
| 420 20 t | 20 t | 2000 | 2 kg | 30 t | 40 t |
| 420 30 t | 30 t | 2000 | 3 kg | 45 t | 60 t |

MODELO 420

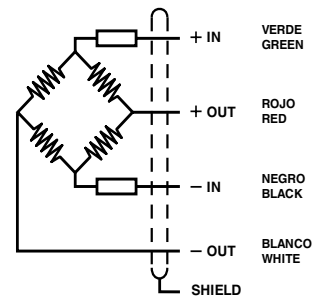


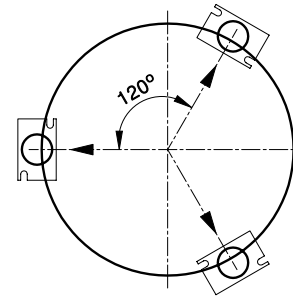
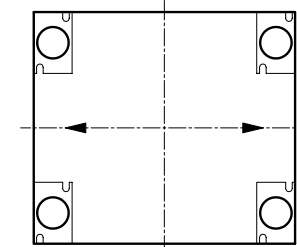
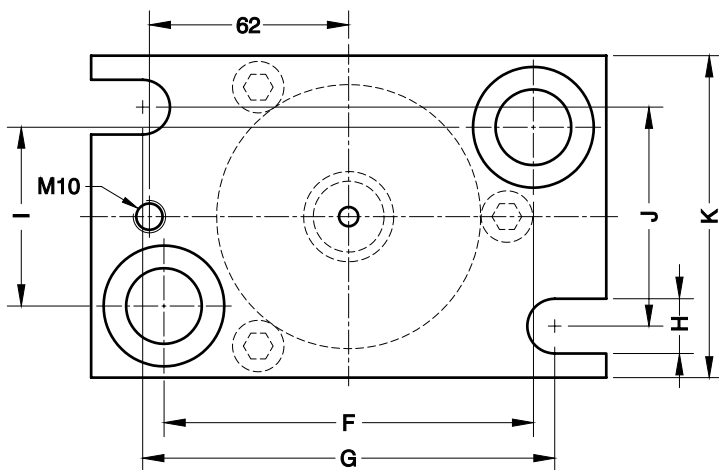
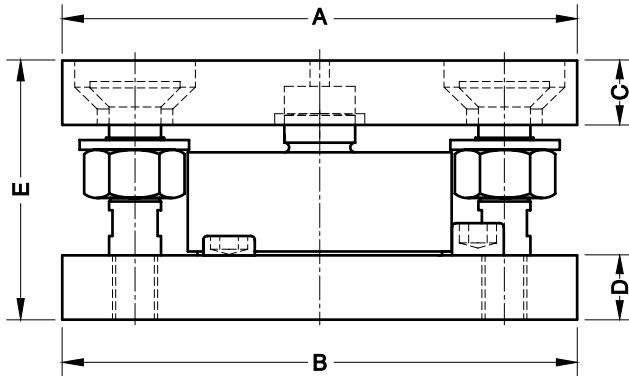
| Carga Nominal Nominal Load | A \varnothing | B | C | D | E \varnothing | r. F | Peso transporte Transport Weight |
|-------------------------------|-----------------|----|----|----|-----------------|------|-------------------------------------|
| 2.5...10 t | 82 | 32 | 12 | 44 | 22 | 130 | 1.1 kg |
| 20...30 t | 126 | 40 | 14 | 54 | 35 | 200 | 2.8 kg |

Dimensiones en mm. *Dimensions in mm.*

| ESPECIFICACIONES | | | SPECIFICATIONS |
|---|----------------|------------|--------------------------------|
| Cargas nominales (Ln) | 2.5-5-10-20-30 | t | Nominal capacities (Ln) |
| Clase de precisión | 2000 | n. OIML | Accuracy class |
| Carga mínima | 0 | %Ln | Minimum dead load |
| Carga de servicio | 150 | %Ln | Service load |
| Cargas límite | 200 | %Ln | Safe load limit |
| Error combinado | < ± 0.025 | %Sn | Total error |
| Error repetibilidad | < ± 0.015 | %Sn | Repeatability error |
| Efecto de la temperatura: en el cero | < ± 0.01 | %Sn/5 °C | Temperature effect: on zero |
| en la sensibilidad | < ± 0.009 | %Sn/5 °C | on sensitivity |
| Error de fluencia (30 minutos) | < ± 0.024 | %Sn | Creep error (30 minutes) |
| Compensación de temperatura | -10...+40 | °C | Temperature compensation |
| Límites de temperatura | -50...+70 | °C | Temperature limits |
| Sensibilidad nominal (Sn) | 2 \pm 0.1% | mV/V | Nominal sensitivity (Sn) |
| Tensión de alimentación nominal | 10 | V | Nominal input voltage |
| Tensión de alimentación máxima | 15 | V | Maximum input voltage |
| Resistencia de entrada | 800 \pm 30 | Ω | Input impedance |
| Resistencia de salida | 700 \pm 5 | Ω | Output impedance |
| Desequilibrio inicial | ± 2 | %Sn | No load output |
| Resistencia de aislamiento | > 5000 | M Ω | Insulation resistance |
| Deformación máxima (a Ln) | < 0.6 | mm | Maximum deflection (at Ln) |

CONEXIÓN ELÉCTRICA ELECTRICAL CONNECTION:



SOPORTE COMPLETO SILO CON ANTIVUELCO PARA MOD.420
MOUNTING KIT LIFT-OFF PREVENTION FOR SILO FOR MOD.420


| Accesorio Accessory | Carga Nominal Nominal Load | A | B | C | D | E | F | G | H | I | J | K | Peso Transport Weight |
|------------------------|-------------------------------|-----|-----|----|----|-----|-----|-----|----|------|-----|-----|-----------------------------|
| 42901 | 2.5-5-10 t | 160 | 160 | 20 | 20 | 80 | 115 | 128 | 17 | 55.5 | 68 | 100 | 5.3 kg |
| 42902 | 20-30 t | 218 | 218 | 25 | 25 | 100 | 168 | 180 | 21 | 100 | 100 | 150 | 13.5 kg |

| | Acero cincado / Alloy Steel zinc-plated | | Acero inoxidable / Stainless Steel | |
|--|---|--------------|------------------------------------|---------------|
| | 42901 | 42902 | 42901i | 42902i |
| Máximo desplazamiento horizontal <i>Maximum horizontal offset</i> | ±3 mm | ±3 mm | ±3 mm | ±3 mm |
| Máxima fuerza de levantamiento <i>Maximum lift-off force</i> | 72 kN | 110 kN | 59 kN | 84.5 kN |
| Máxima fuerza horizontal <i>Maximum horizontal force</i> | 22 kN | 32 kN | 22 kN | 32 kN |

 Dimensiones en mm. *Dimensions in mm.*