

The vent panels are designed to open at a predetermined pressure to release the explosion overpressure to a safe area and without fragment emission, thus preventing the design strength of the vessel from being exceeded design strength of the vessel.

BRP, BCP, and BTP flat vent panels are suitable for atmospheric applications operating with no vacuum or very low vacuum and no pulsing pressures, such as silos with mechanical filling or bucket elevators.

## Flat Explosion Vent panels BRP, BCP, BTP



### Technical features

- For organic and metal dusts up to St3 and gas group IIA
- Dimensions from 150 to 2000 mm
- Pstat at 20°C: 20 to 500 mbarg ±15%
- Working pressure: 50% Pstat
- Max. vacuum resistance: -40 mbar
- Standar working temperature: -20° to 90°C
- Material: AISI 304L o AISI 316L
- ATEX Certificate: LOM18ATEX1021X



### Technical features

- For organic and metal dust up to St2
- Pstat at 20°C: 20 to 500 mbarg ±15%
- Working pressure: 50% Pstat
- Max. vacuum resistance: -40 mbar
- Standar working temperature: -20°C a +90°C
- Material: AISI 304L o AISI 316L
- ATEX Certificate: LOM18ATEX1021X



### Technical features

- For organic and metal dust up to St1
- Pstat at 20°C: 20 to 100 mbarg ±15%
- Working pressure: 40% Pstat
- Max. vacuum resistance: -20°C a +90°C
- Material: AISI 304L o AISI 316L
- ATEX Certificate: LOM18ATEX1021X

	TYPE	MEASUREMENTS (MM) LENGHT X WIDTH	AV (M2)
	BRP - RECTANGULAR		
	BRP350X200	350X200	0,032
	BRP550X250	550X250	0,080
	BRP380X380	380X380	0,090
	BRP610X300	610X300	0,117
	BRP550X350	550X350	0,127
	BRP496X496	496X496	0,173
	BRP690X385	690X685	0,177
	BRP740X460	740X460	0,238
	BRP880X530	880X530	0,360
	BRP690X690	690X690	0,370
	BRP740X740	740X740	0,413
	BRP990X660	990X660	0,498
	BRP1000X666	1000X666	0,539
	BRP1000X1000	1000X1000	0,846
	BRP1000X1100	1000X1100	1,040
	BRP1500X1200	1500X1200	1,590
	BRP2080X2080	2080X2080	2,000

	TYPE	MEASUREMENTS Ø (MM)	AV (M2)
	BCP - CIRCULAR		
	BCP280	280	0,031
	BCP370	370	0,071
	BCP470	470	0,115
	BCP565	565	0,159
	BCP715	715	0,317
	BCP974	974	0,614
	BCP1020	1020	0,679

	TYPE	MEASUREMENTS (MM) LENGHT X WIDTH X WIDTH	AV (M2)
	BTP - TRAPEZOIDAL		
	BTP1400	1400X600X367	0,53
	BTP1700	1700X600X367	0,65

Test according to EN14797 and EN10204 standars.  
For other sizes and/or working conditions, please contact Adix.



The vent panels are designed to open at a predetermined pressure to release the explosion overpressure to a safe area without the release of fragments, thus preventing it from exceeding the design strength of the vessel.

Single-layer domed vents (BRD and BCD) are suitable for vacuum and pulsating pressure applications such as pneumatically filled silos, suction filters, or cyclones.

## Domed Explosion Vent Panels BRD, BCD



### Technical features

- For organic and metal dusts up to St3 and gas group IIA
- Pstat at 20°C: 20 to 500 mbarg ±15%
- Working pressure: 70% Pstat
- Max. vacuum resistance: -300 mbar
- Standar working temperature: -20° to 90°C
- Material: AISI 304L o AISI 316L
- ATEX Certificate: LOM18ATEX1021X

	TYPE	MEASUREMENTS (MM) LENGHT X WIDTH	AV (M2)
	BRD - RECTANGULAR	BRD550X250	550X250
BRD380X380		380X380	0,090
BRD550X350		550X350	0,127
BRD537X385		537X385	0,139
BRD496X496		496X496	0,173
BRD496X496		496X496	0,173
BRD690X425		690X425	0,210
BRD670X570		670X570	0,289
BRD970X537		970X537	0,393
BRD740X740		740X740	0,413
BRD1000X666		1000X666	0,539
BRD1000X1000		1000X1000	0,846



### Technical features

- For organic and metal dust up to St2
- Pstat at 20°C: 20 to 500 mbarg ±15%
- Working pressure: 70% Pstat
- Max. vacuum resistance: -800 mbar
- Standar working temperature: -20°C a +90°C
- Material: AISI 304L o AISI 316L
- ATEX Certificate: LOM18ATEX1021X

	TYPE	MEASUREMENTS Ø (MM)	AV (M2)
	BCD - CIRCULAR	BCD280	280
BCD370		370	0,071
BCD470		470	0,115
BCD565		565	0,159
BCD715		715	0,317
BCD974		974	0,614
BCD1020		1020	0,679

Test according to EN14797 and EN10204 standars.  
For other sizes and/or working conditions, please contact Adix.

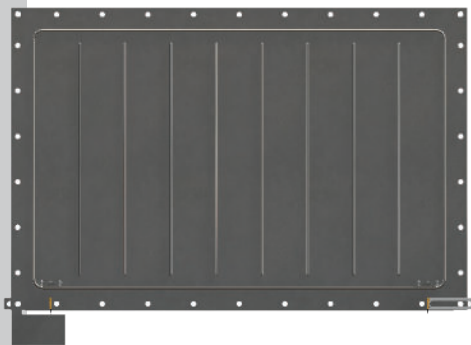




The vent panels are designed to open at a predetermined pressure to release the explosion overpressure to a safe area without the release of fragments, thus preventing the design strength of the vessel from being exceeded.

BRS folded vent panels are suitable for low vacuum and pulsating pressure applications such as pneumatically filled silos, suction filters, or cyclones.

## Flat Explosion Vent Panel BRS

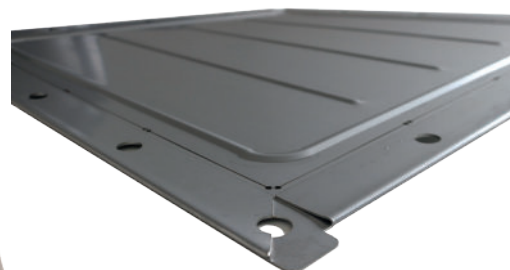


### Technical features

- For organic and metal dust up to St3
- Pstat at 20°C: 20 to 500 mbarg ±15%
- Working pressure: 50% Pstat
- Standar working temperature.: -20° to 90°C
- Max. vacuum resistance: -100 mbar
- Material: AISI 304L o AISI 316L
- ATEX Certificate: LOM18ATEX1021X/ 1

BRS- RECTANGULAR	TYPE	MEASUREMENTS (MM) LENGHT X WIDTH	AV (M2)
	BRS670X570	350X200	0,289
BRS880X530	880X530	0,360	
BRS1000X666	1000X666	0,539	
BRS1000X1000	1000X1000	0,846	

Test according to EN14797 and EN10204 standars.  
For other sizes and/or working conditions, please contact Adix.



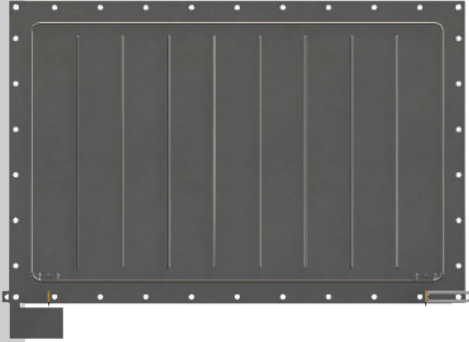
INERIS



The vent panels are designed to open at a predetermined pressure to release the explosion overpressure to a safe, non-fragmenting area, thus preventing the design strength of the vessel from being exceeded.

BRH vent panels are designed for installation on external walls of battery rooms to relieve overpressure caused by explosions due to the release of hydrogen gas.

## Flat Explosion Vent panel BRH

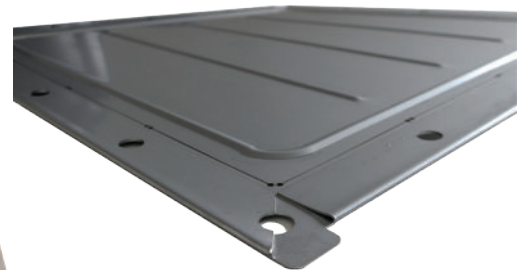


### Technical features

- For organic and metal dust up to St3
- Pstat at 20°C: 20 to 500 mbarg ±15%
- Working pressure: 50% Pstat
- Standar working temperature: -20° to 90°C
- Resistencia máx. vacío: -100 mbar
- Material: AISI 304L o AISI 316L
- ATEX Certificate: LOM18ATEX1021X/ 1

BRS- RECTANGULAR	TYPE	MEASUREMENTS (MM) LENGHT X WIDTH	AV (M2)
	BRH670X570	350X200	0,289
	BRH880X530	880X530	0,360
	BRH1000X666	1000X666	0,539
	BRH1000X1000	1000X1000	0,846

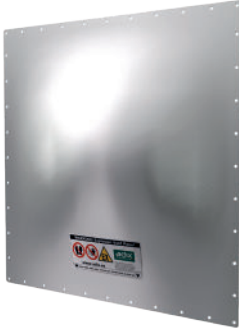
Test according to EN14797 and EN10204 standars.  
For other sizes and/or working conditions, please contact Adix.



The vent panels are designed to open at a predetermined pressure to release the explosion overpressure to a safe zone without emission of fragments, thus preventing it from exceeding the design resistance of the container

Double-layer domed vents (BRDM) are suitable for vacuum pressure applications such as suction filters, or cyclones.

## Domed Explosion Vent Panels BRDM, BDC



### TECHNICAL FEATURES

- For organic and metallic dust St3
- Pstat a 20°: 40 to 500 mbarg ±15%
- **Working Pressure:** 70% Pstat
- **Max resistance empty:** -1000 mbar
- **Standar Working Temp.:** -20° to 90°C
- **Material:** AISI 304L o AISI 316L
- **ATEX Certificate:** LOM18ATEX1021X

	TYPE	EXTERNAL DIMENSIONS (MM)	NOMINAL SIZE (MM)	VENT AREA A <sub>v</sub> (m <sup>2</sup> )
BRDM- RECTANGULAR	BRDM550X250	550X250	470X170	0,072
	BRDM550X350	550X350	470X270	0,114
	BRDM537X385	537X385	457X305	0,125
	BRDM496X496	496X496	416X416	0,156
	BRDM690X425	690X425	610X345	0,189
	BRDM670X570	670X570	590X490	0,260
	BRDM880X530	880X530	800X450	0,324
	BRDM970X537	970X537	890X457	0,366
	BRDM1000X666	1000X666	920X586	0,485
	BRDM1000X1000	1000X1000	920X920	0,761

Tests in accordance with EN14797 and EN10204 standards.  
For other sizes and/or working temperatures, consult Adix.